

# NETWORKING IN THE GLL

## Frequently Asked Questions



University of Mississippi – Department of Geology and Geological Engineering

University of Mississippi Geoinformatics Center (UMGC)

Geoinformatics Learning Laboratory (GLL)

---

### *Networking*

All the computers in the GLL are networked. Instructors, graduate students and follow students are always helpful. ***ALWAYS ASK!! Keep in mind and MANY companies you will be working for have a network of some kind. It is to your benefit that you learn to navigate and utilize networks.***

***WARNING!!!!!! When working with networked systems ALWAYS keep a notebook of your activities.***

---

### *FAQ -*

***How do I add a networked drive of a computer running a Microsoft operating system?***

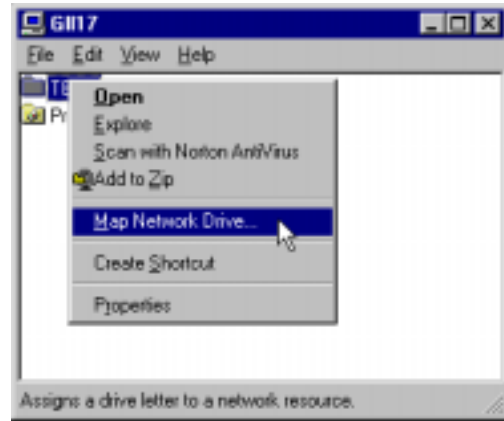
Locate and open the  icon on the NT desktop.

In the **Network Neighborhood** window, you will find all the networked machines under the UMGC Domain. Please note the computer you are currently using. Look around at the names of computers near you and locate them on the list currently displayed on the screen. All stations will be numbered. Find the GLL17 icon and double-click on the icon. From here you should have a list of all the directories available on the GLL17 machine. Now right-mouse button click

the directory and select the option “Map Network Drive”. Select a drive letter for the directory, say “X”. You have now created a networked drive called “X” on your computer.

To verify this, go to the  icon and open the system window.

### SUMMARY



**CHECK!!**



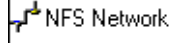
***Why are there no directories listed in a computer I am networking?***

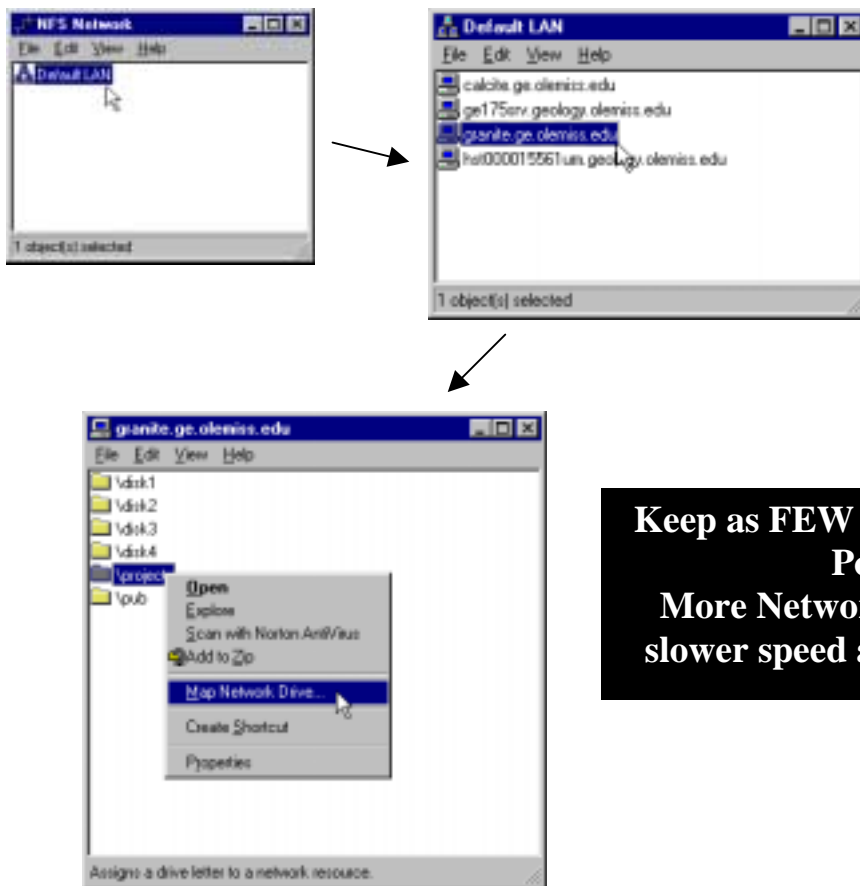
The directory you wish to add as a networked drive **MUST** first be SHARED!!

***How do I add a networked drive of a computer running a UNIX operating system and HOW do I connect to GRANITE?***

Granite is a UNIX computer. And connecting to a UNIX computer is VERY similar to the Microsoft operating system but there is an added step. There is a software the GLL uses to “see” UNIX computers. This software is for network file system (NFS).

Go to the  icon.

From the Network Neighborhood window you will see the NFS Network Icon 



**Keep as FEW drives networked as Possible!!  
More Networked Drives means slower speed and more confusion**

## *How do I remove a networked drive?*

With in the My Computer window, select the drive you wish to delete and right-mouse button select the Disconnect option.



## *Rules of Thumb-*

- Never disconnect a network drive while programs are running. Disconnecting a drive where data is being used by ArcView will cause the program to close and ALL changes are LOST!
- Keep your naming conventions the same. \granite\projects is always the F: drive and so on. This will minimize confusion and make using ArcView easier.
- Keep a notebook!! This will help to eliminate lost files.
- **ALWAYS ASK!!**
- **ALWAYS ASK!!**